

[All Categories - Shop Online](#) > Item # RKS564AC-TS30-3

Item # RKS564AC-TS30-3, Microstep Stepper Motor & Driver



[Specifications](#) | [Dimensions](#) | [Speed-Torque](#) | [Connection](#) | [System](#)

Specifications

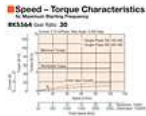
Return Policy This product cannot be cancelled or returned once the order has been processed.

Basic Step Angle 0.024°

Frame Size 2.36 in

Motor Length 1.91 in.

Speed-Torque Characteristics



Holding Torque 848 oz-in

Type Geared

Shaft/Gear Type Spur Gear (Offset Shaft)

Gear Ratio (X:1) 30 :1

Backlash 10 arc min (0.17°)

Shaft Single

Electromagnetic Brake Not Equipped

Power Supply Single-Phase 200-240 VAC

Current 2.4 A

Permissible Speed Range (r/min) 0 ~ 150

Rotor Inertia 0.88 oz-in²

Radial Load
0 in. from Shaft End = 38 lb
0.2 in. from Shaft End = 41 lb
0.39 in. from Shaft End = 45 lb
0.59 in. from Shaft End = 48 lb
0.79 in. from Shaft End = 51 lb

Axial Load 9 lb

RoHS Compliant Yes

Safety Standards UL

CE

CE Marking

Low Voltage Directives
EMC Directives

Components

PKE564AC-TS30 [Motor]
RKSD507-C [Driver]

Degree of Protection

IP20

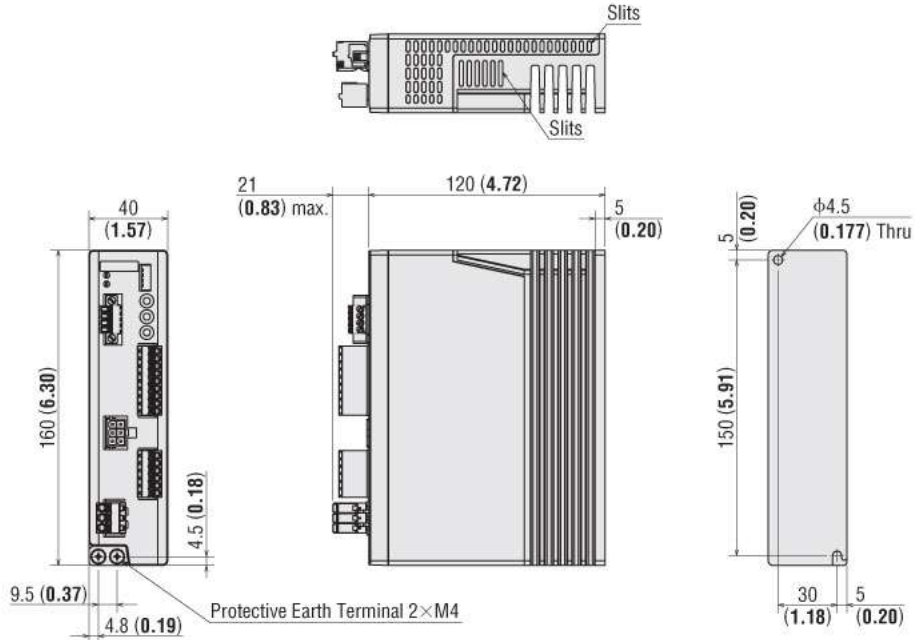
Dimensions

Dimensions Unit = mm (in.)

● Drivers

◇ Pulse Input Type

Mass: 0.8 kg (1.76 lb.) **CAD** Standard Type with Electromagnetic Brake: B1014, Standard Type: B1015



● Included

- I/O Signal Connector (CN5)
Connector:FK-MCP1,5/9-ST-3,81 (PHOENIX CONTACT GmbH & Co.,KG.)
- Pulse Input Connector (CN4)
Connector:FK-MCP1,5/6-ST-3,81 (PHOENIX CONTACT GmbH & Co.,KG.)
- Electromagnetic Brake Connection Terminal Connector (CN1)
Connector:MC1,5/4-STF-3,5 (PHOENIX CONTACT GmbH & Co.,KG.)
- Power Source Input Connector (CN3)
Connector:FKCT2,5/3-ST-5,08 (PHOENIX CONTACT GmbH & Co.,KG.)

* Electromagnetic brake type only

■ Dimensions Unit = mm (in.)

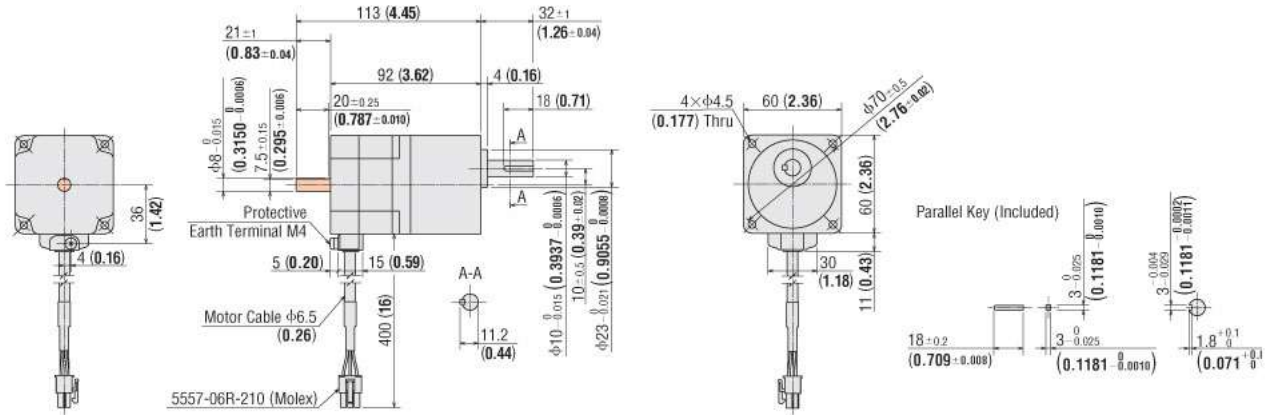
● Motors

◇ TS Geared Type

Frame Size 60 mm (2.36 in.)

Product Name		Motor Product Name	Gear Ratio	Mass kg (lb.)	CAD
Built-in Controller	Pulse Input				
RKS564A-D-TS-3	RKS564A-TS-3	PKE564AC-TS	3.6 7.2	1.1 (2.4)	B1052
RKS564B-D-TS-3	RKS564B-TS-3	PKE564BC-TS	10, 20, 30		

● Mounting Screw: M4×60 P0.7 (4 screws are included with the product)



■ Dimensions Unit = mm (in.)

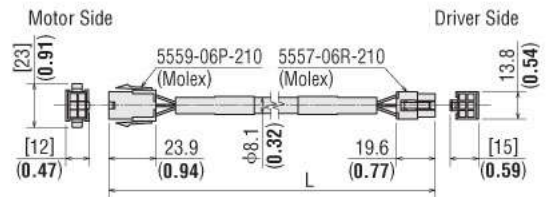
● Cable for Motor (Included)

◇ Only with the Type Supplied with a Connection Cable

Common to All Types

● Cable for Motor

Cable Type	Length L m (ft.)
Cable for Motor	3 (9.8)

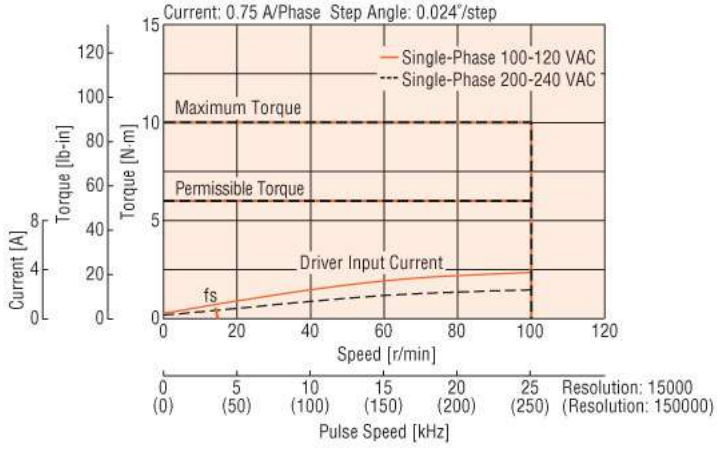


Speed-Torque

Speed – Torque Characteristics

fs: Maximum Starting Frequency

RKS564 Gear Ratio: **30**

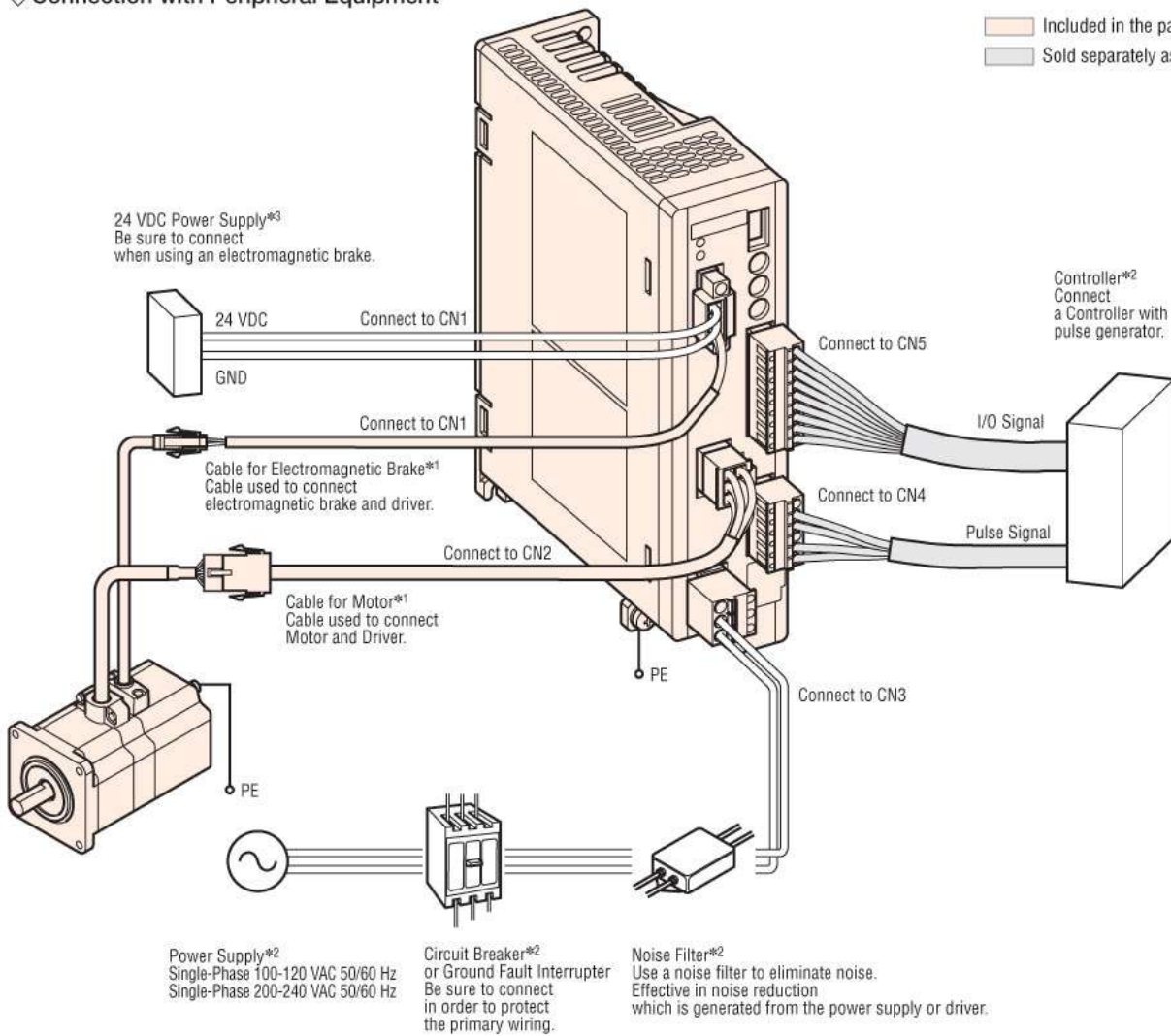


Connection

● Connection Diagram

◇ Connection with Peripheral Equipment

Included in the package.
 Sold separately as Accessories.



*¹ Each product comes with a motor cable 3 m (9.8 ft.) long. Different lengths and flexible cables are available (sold separately).

When wiring the motor and the driver, keep a maximum distance of 20 m (65.6 ft.).

*² Not Supplied.

*³ Not Supplied. If the wiring distance between the motor and driver is extended to 15 m (49.2 ft.) or longer by using an accessory cable (Sold separately), the 24 VDC \pm 4% specification applies.

System

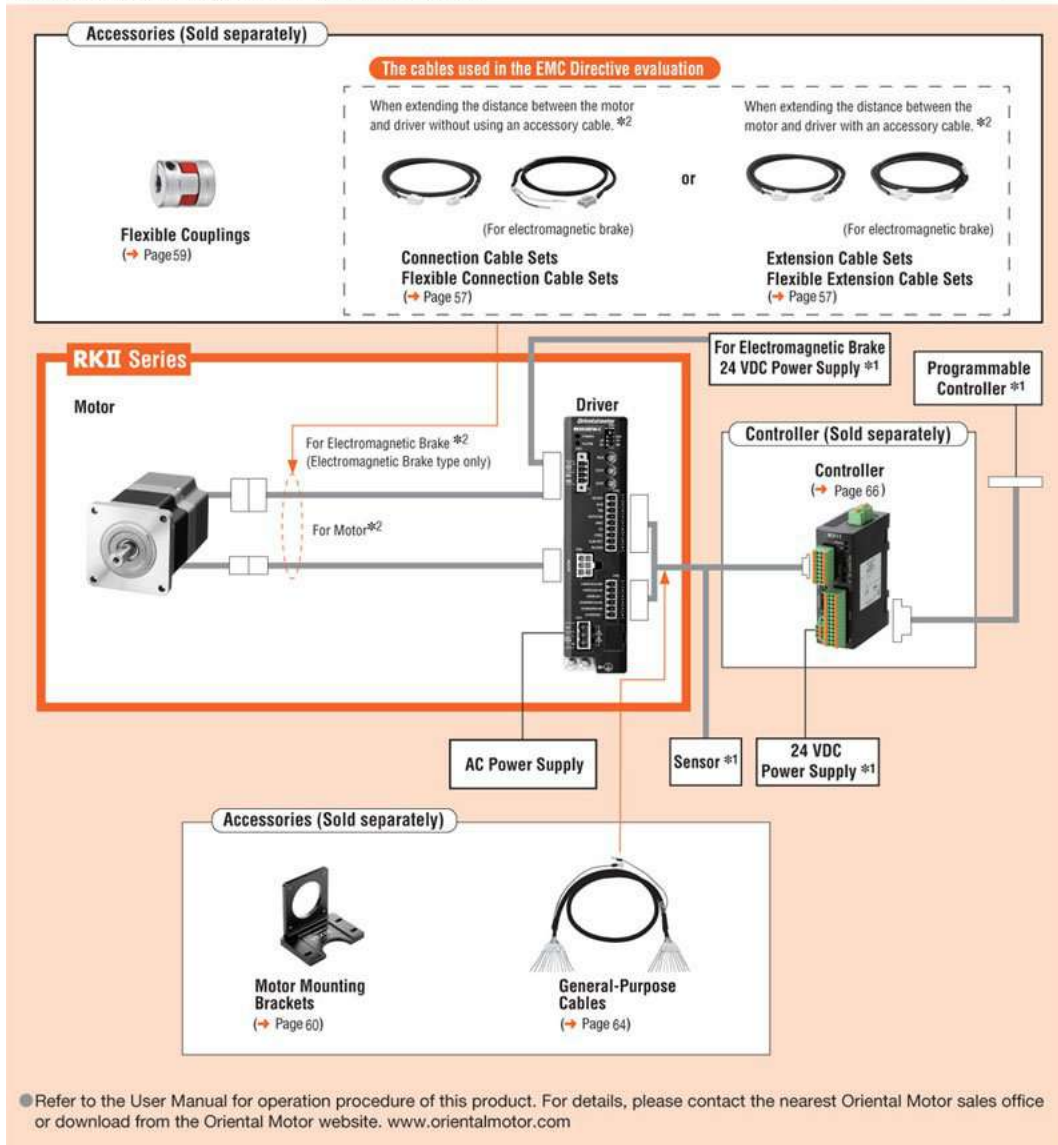
System Configuration

Pulse Input Type/Standard Type with Electromagnetic Brake

A single-axis system configuration with the **SCX11** controller.

*1 Not supplied

*2 Only the model includes connecting cable



¹ Quoted Ship Date for orders placed before 12:00 pm PST. Quantities may affect Shipping Date.