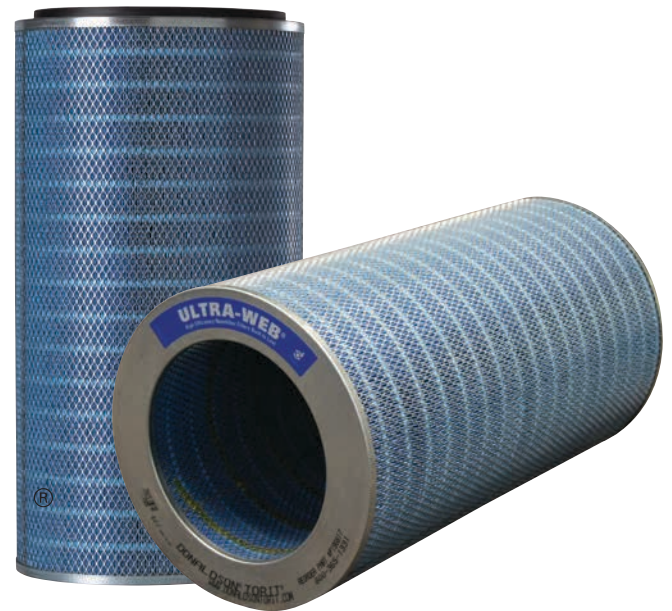


- Fine fiber technology ensures longer filter life at a significantly lower pressure drop
- Substrate media features increased rigidity, higher durability, and superior cleanability
- MERV* 15 filtration efficiency rating per ASHRAE 52.2-2007
- Superior particle release due to surface filtration
- Lower pressure drop saves energy
- Longer filter life reduces replacement and maintenance costs
- Lightweight and easy to install
- Flame retardant media available
- Stainless steel construction available



Ultra-Web Cartridge

APPLICATIONS

- Premium performance on extremely fine, dry, and nonfibrous dust
- Durable for more abrasive dust
- Outer liner available for most applications
- Outer liner removed for agglomerative dust applications

THE ULTRA-WEB ADVANTAGE IS CLEANER AIR

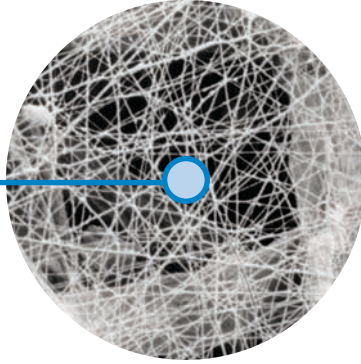
Ultra-Web® is proprietary and made with an electrospinning process that produces a very fine, continuous, resilient fiber of 0.2-0.3 micron in diameter to form a permanent web-like net. This fine fiber “web” with its very fine interfiber spaces is constructed onto tough cellulose substrate media, resulting in:

- A more robust media that captures even submicron dust on the surface
- Better pulse cleaning and lower pressure drop
- Cleaner air, longer filter life, and greater cost savings

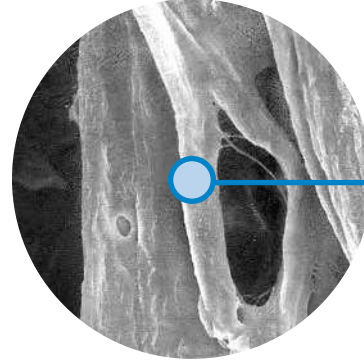
SEM IMAGES²

1 micron = 1/25,400 of an inch
(1/1000 of a millimeter)

10 micron



Ultra-Web (600x)
Fine Fiber Media



10 micron

Cellulose Media (600x)

* Refer to Minimum Efficiency Reporting Value on page 4.

SPECIFICATIONS

MEDIA COMPOSITION	
Fine Fiber Technology	Durable proprietary synthetic filter media fibers and polymer Mean fiber diameter of 0.2 µm
Substrate	Proprietary blend of cellulose fibers Flame retardant version per UL® Standard 558, TAPPI Standard T 461om-94, and DIN 53438 Part 3

CARTRIDGE CONSTRUCTION	
Standard Construction	Galvanized metal end caps Galvanized expanded metal liner 72% open area Urethane gasket
Options	Stainless steel liner and end caps No outer liner version EPDM gasket

MEDIA COMPATIBILITY DATA	
Temperature Resistance	180°F / 82°C
Moisture Absorption*	Maximum 14% @ 70°F (21°C) and 65% RH
Chemical Tolerance*	Acids→Poor Oxidants→Poor Bases→Fair Solvents→Fair
Abrasion Resistance	Good per TAPPI 476 (Taber Method)

MEDIA EFFICIENCY	
U.S. Efficiency Rating	MERV* 15 per ASHRAE 52.2-2007

* Refer to Minimum Efficiency Reporting Value on page 2.

† Scanning Electron Microscope

CONFIGURATIONS

Collector Models		Filter Area		Pleat Height		Dimensions		Ultra-Web				
		ft²	m²	in	mm	in	mm	Standard	FR	NL	SS	Beaded
AerBooth		170	15.8	1.5	38.1	11.74 x 26	298.2 x 660.4	•	•			
		226	21.0	2.0	50.8	12.74 x 26	323.6 x 660.4	•	•	•	•	•
Ambient Air Tubesheets	Cylindrical	226	21.0	2.0	50.8	12.74 x 26	323.6 x 660.4	•	•			
	Coned	260	24	2.0	50.8	12.74 x 15.9 x 26	322.6 x 403.9 x 660.4	•	•	•		
Bin Vent (TBV)		170	15.8	1.5	38.1	11.74 x 26	298.2 x 660.4	•	•			
		226	21.0	2.0	50.8	12.74 x 26	323.6 x 660.4	•	•	•	•	•
CF Series		226	21.0	2.0	50.8	12.74 x 26	323.6 x 660.4		•			
CX Series		191	17.7	1.5	38.1	12.84 x 26	326.1 x 660.4	•	•	•		•
		254	23.6	2.0	50.8	13.84 x 26	351.5 x 660.4	•	•	•		•
Downdraft Bench (DB)		191	17.7	1.5	38.1	12.84 x 26	326.1 x 660.4	•	•	•		•
		254	23.6	2.0	50.8	13.84 x 26	351.5 x 660.4	•	•	•		•
Torit Downdraft Bench (TDDB)		226	21.0	2.0	50.8	12.74 x 26	323.6 x 660.4		•			
Downflo® (DF)		170	15.8	1.5	38.1	11.74 x 26	298.2 x 660.4	•	•			
		226	21.0	2.0	50.8	12.74 x 26	323.6 x 660.4	•	•	•	•	•
Downflo II (DFT)		191	17.7	1.5	38.1	12.84 x 26	326.1 x 660.4	•	•			
		254	23.6	2.0	50.8	13.84 x 26	351.5 x 660.4	•	•	•	•	•
Downflo Containment System (DCS)		190	17.7	1.5	38.1	11.4 x 14.4 x 26	289.6 x 365.8 x 660.4	•	•	•	•	
Downflo Oval (DFO)		190	17.7	1.5	38.1	11.4 x 14.4 x 26	289.6 x 365.8 x 660.4	•	•	•	•	
Downflo Evolution (DFE)		254	23.6	2	50.8	13.74 x 13.74 x 26	348.9 x 348.9 x 660.4	•	•	•	•	•
Downflo (SDF)		103	9.6	1.5	38.1	9.2 x 22.3	233.7 x 566.4	•	•			
Downflo WorkStation (DWS)		190	17.7	1.5	38.1	11.4 x 14.4 x 26	289.6 x 365.8 x 660.4	•	•	•	•	
Easy-Trunk™		103	9.6	1.5	38.1	9.2 x 22.3	233.7 x 566.4		•			
Environmental Control Booth™ (ECB)		170	15.8	1.5	38.1	11.74 x 26	298.2 x 660.4	•	•			
		226	21.0	2.0	50.8	12.74 x 26	323.6 x 660.4	•	•	•	•	•
Mini-Trunk™		72	6.7	1.5	38.1	9.2 x 16	233.7 x 406.4		•			
MTD		170	15.8	1.5	38.1	11.74 x 26	298.2 x 660.4	•	•			
		226	21.0	2.0	50.8	12.74 x 26	323.6 x 660.4	•	•	•	•	•
Porta-Trunk™		220	20.4	2.0	50.8	17.6 x 18	447.0 x 457.2		•			
ProBooth™		170	15.8	1.5	38.1	11.74 x 26	298.2 x 660.4	•	•			
		226	21.0	2.0	50.8	12.74 x 26	323.6 x 660.4	•	•	•	•	•
TD Large		170	15.8	1.5	38.1	11.74 x 26	298.2 x 660.4	•	•			
		226	21.0	2.0	50.8	12.74 x 26	323.6 x 660.4	•	•	•	•	•
TD Small		45	4.2	1.5	38.1	7.9 x 16	200.7 x 406.4	•	•			
		60	5.5	2.0	50.8	7.9 x 16	200.7 x 406.4	•	•	•	•	
Trunk 2000 (T-2000)		212	19.7	2.0	50.8	13.84 x 22	351.5 x 558.8		•			
WeldAir		103	9.6	2.0	50.8	9.2 x 22.3	233.7 x 566.4		•			
		220	20.4	2.0	50.8	17.6 x 18	447.0 x 457.2		•			
Weld Bench		254	23.6	2.0	50.8	13.84 x 26	351.5 x 660.4		•			

MINIMUM EFFICIENCY REPORTING (MERV)

The Minimum Efficiency Reporting Value (MERV) of this filter cartridge has been determined through independent laboratory testing using ASHRAE 52.2 (2007) test standards. The MERV rating was determined at a face velocity of 118 feet per minute (36.0 meters per minute) and loading up to four inches (101.6 millimeters) water gauge. Actual efficiency of any filter cartridge will vary according to the specific application parameters. Dust concentration, airflow, particle characteristics, and pulse cleaning methods all affect filtration efficiency.

MOISTURE ABSORPTION

Environmental conditions involving combinations of high temperature, corrosive material, and moisture can reduce media strength. Reduction in media strength may compromise cartridge integrity and performance.

CHEMICAL TOLERANCE

A combination of chemicals may alter fiber resistance to the specified performance level. Chemical attack may compromise cartridge integrity and performance.

Significantly improve the performance of your collector with genuine Donaldson Torit replacement filters and parts. **Call Donaldson Torit at 800-365-1331.**

Important Notice

Many factors beyond the control of Donaldson can affect the use and performance of Donaldson products in a particular application, including the conditions under which the product is used. Since these factors are uniquely within the user's knowledge and control, it is essential the user evaluate the products to determine whether the product is fit for the particular purpose and suitable for the user's application. All products, product specifications, availability and data are subject to change without notice, and may vary by region or country.



Donaldson Company, Inc.
Minneapolis, MN
donaldson.com • shop.donaldson.com

North America
Email: donaldson@donaldson.com
Phone: (USA): +1-800-365-1331 • (MX): +1-800-343-36-39

Australasia
Email: marketing.australia@donaldson.com
Phone: +61-2-4350-2000
Toll Free: (AU) +1800-345-837 • (NZ) +0800-743-387

F118123 ENG (02/20) Ultra-Web Cartridge ©2011-2020 Donaldson Company, Inc. Donaldson, Torit, Downflo, Ultra-Web, Easy-Trunk, Environmental Control Booth, Mini-Trunk, Porta-Trunk, ProBooth and the color blue are marks of Donaldson Company, Inc. All other marks belong to their respective owners.

China
Email: info.cn@donaldson.com
Phone: +86-400-820-1038

Donaldson Europe B.V.B.A.
Email: IAF-europe@donaldson.com
Phone: +32-16-38-3811

India
Email: info.difs@donaldson.com
Phone: +91-124-4807-400 • +18001035018

Japan
Email: jp-ndl.ifsw@donaldson.com
Phone: +81-42-540-4112

Korea
Email: iaf-kr@donaldson.com
Phone: +82-2-517-3333

Latinoamerica
Email: IndustrialAir@donaldson.com
Phone: +52-449-300-2442

South Africa
Email: SAMarketing@donaldson.com
Phone: +27-11-997-6000

Southeast Asia
Email: IAFSEA@donaldson.com
Phone: +65-6311-7373