

# Pneumatic Ball

## MODEL BB



**BB-100**



**BB-160**



**BB-130**



**BB-190**

## MODEL V



**V-100**



**V-130**



**V-190**



**V-250**



**V-320**



**V-380**

## MODEL BV



**BV-60**



**BV-130**



**BV-190**



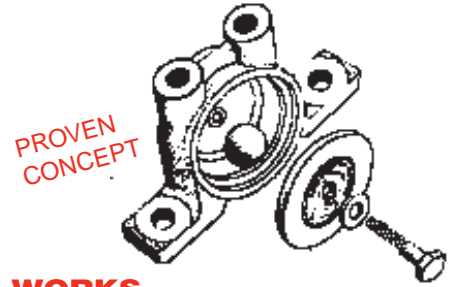
**BV-250**



**BV-320**

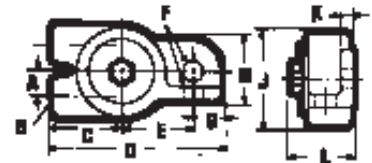


**BV-380**



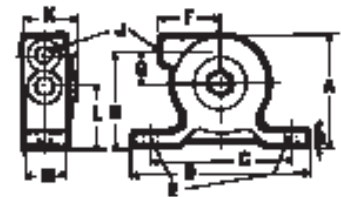
## HOW IT WORKS

Compressed air drives a hardened steel ball at high speeds around a highly finished and hardened steel race creating high frequency vibration. VIBCO BALL VIBRATORS require lubrication for long maintenance-free operation, start in any position. Mount VIBCO BALL VIBRATOR either directly to structure to be vibrated, or use simple mounting plates welded or bolted to the structure for better vibration transfer to a larger surface.



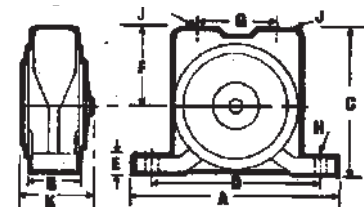
## MODEL BB

The BB Series can be equipped with a muffler on the threaded exhaust port. The threaded exhaust also allows oily exhaust air to be piped away from the area of operation if absolute cleanliness is required. These dual mount vibrators are designed for applications requiring a small to medium amount of vibration such as laboratory equipment, small hoppers, part feeders, chutes and match plates.



## MODEL V

The V-line ball vibrators are the most versatile units. Lowest in cost, light and sturdy, they're made to work in adverse conditions of water, heat, cold or dirt, and in any position. The most versatile and popular unit is the V-320 considered the work horse of the line producing 600 lbs. at 10,000 VPM. Models V-100 & V-130 have built-in exhaust mufflers. All other models have threaded exhaust ports. For units with built-in mufflers, order V-19SE, V-25SE, V-35SE, OR V41SE



## MODEL BV

The BV Series like the others requires lubrication. Will withstand continuous operation at high temperatures up to 350° by maintaining a constant low air pressure of 5 to 10 PSI through unit when not in operation. The easily exchangeable ball races make them easy to repair for prolonged life at a small cost. The top air outlet port allows discharged air to be silenced by a muffler, or piped away from the area of operation if absolute cleanliness is required.

# Vibrators

- **SIMPLE**
- **BUILT-IN-MUFFLER**
- **REMOVABLE RACE FOR EASY MAINTENANCE**
- **HIGH TEMPERATURE OPERATION**

## TECHNICAL DATA

Model	Weight		20 PSI		40 PSI		60 PSI		lbs.	Force	N	dB*/VPM	Max. Lbs. ** Material In Bin
	lbs.	kg.	Speed VPM	CFM	Speed VPM	CFM	Speed VPM	CFM					
BB-100	8 oz.	.227	17000	2	20000	4	24000	6	55	245	75/20000	550	
BB-130	10 oz	.283	12000	2.5	15000	5	19000	7.5	80	356	72/15000	800	
BB-160	16 oz.	.454	11000	3	13000	6	15000	8	140	623	76/13000	1400	
BB-190	18 oz.	.510	10000	4	12000	7	15500	11	250	1112	77/12000	2500	
BV-60	8 oz.	.227	17000	2	20000	4	24000	6	55	245	75/20000	550	
BV-130	11 oz	.312	12000	2	15000	5	19000	7.5	80	356	76/15000	800	
			40 PSI		60 PSI		80 PSI						
BV-190	24 oz.	.689	12000	6	14000	10	16000	11	260	1157	77/12000	2600	
BV-250	2.8	1.3	9200	8	10500	11	11000	13	380	1691	79/9200	3800	
BV-320	4.8	2.2	6500	9	7500	14	8400	17	480	2136	80/6500	4800	
BV-380	6.2	2.8	5500	10	6200	15	6500	20	600	2669	82/5500	6000	
V-100	8 oz.	.227	20000	4	24000	6	-	-	55	245	75/20000	550	
V-130	11 oz	.312	15000	5	19000	7.5	-	-	80	356	72/15000	800	
V-190	26 oz.	.737	12000	6	14000	10	16000	11	260	1157	73/16000	2600	
V-250	2.6	1.2	9200	8	10500	11	11000	13	380	1691	72/11000	3800	
V-320	4.6	2.1	7500	12	8900	14	10000	17	650	2892	78/10000	6500	
V-380	6.2	2.8	5500	10	6200	15	6500	20	600	2669	78/6500	6000	

\* Data obtained on Laboratory test block. Frequency and force will decrease on less rigid mount.

\*\* Decibel from A-scale at 1 meter. N = Centrifugal force in Newton.

\*\* Rule of thumb for sizing "One lb. Vibrator Force" to each 10 lbs. of "Bin Content" at 80 PSI.

Note: Dimensions & data subject to change without notice.

## DIMENSIONS

MODEL	A inch/mm	B* inch	C inch/mm	D inch/mm	E inch/mm	F** inch/mm	G inch/mm	H inch/mm	J inch/mm	K inch/mm	L inch/mm
BB-100	9/16 14	1/8-NPT	1 1/4 32	3 1/4 83	1 3/8 35	5/16 8	1/2 12	1 25	2 51	5/16 8	1 9/16 40
BB-130	5/8 16	1/4-NPT	1 5/8 41	3 3/4 95	1 9/16 40	3/8 10	9/16 14	1 3/16 30	2 1/4 57	5/16 8	1 15/16 49
BB-160	3/4 19	1/4-NPT	1 3/4 44	4 1/8 105	1 13/16 46	3/8 10	5/8 16	1 1/4 32	2 9/16 65	3/8 10	2 51

MODEL	A inch/mm	B inch/mm	C inch/mm	D inch/mm	E** inch/mm	F inch/mm	G inch/mm	H inch/mm	J* inch	K inch/mm	L inch/mm	M inch/mm
V-100	2 51	7/16 11	3 76	3 7/8 98	1/4 6	1 5/16 33	5/8 16	1 11/16 43	1/8-NPT	1 11/16 43	1 25	3/4 19
V-130	2 5/16 59	7/16 11	4 102	4 7/8 124	3/8 10	1 1/2 38	3/4 19	1 15/16 49	1/8-NPT	1 15/16 49	1 1/4 32	1 5/16 24
V-190	3 3/16 81	9/16 14	4 102	5 1/16 129	3/8 10	2 51	7/8 22	2 5/8 67	1/4-NPT	2 3/16 56	1 3/4 44	1 5/16 33
V-250	3 1/2 89	9/16 14	4 102	5 9/16 141	1/2 12	2 1/4 57	1 1/8 29	2 15/16 87	1/4-NPT	2 7/16 62	1 7/8 48	1 1/2 38
V-320	4 7/8 124	3/4 19	4 102	5 9/16 141	1/2 12	2 3/8 60	1 3/8 35	4 1/8 105	3/8-NPT	2 3/4 70	2 3/4 70	1 1/2 38
V-380	4 7/8 124	7/8 22	5 1/2 x 1 1/4 140 x 32	6 7/8 175	3/8 10	2 7/8 73	1 1/2 38	3 7/8 98	3/8-NPT	2 15/16 75	2 1/2 64	2 3/8 60

MODEL	A inch/mm	B inch/mm	C inch/mm	D inch/mm	E inch/mm	F inch/mm	G inch/mm	H** inch/mm	I* inch	J* inch/mm	K inch/mm
BV-60	3 7/8 98	3/4 19	2 1/2 64	3 76	5/8 16	1 1/4 32	1 1/4 32	1/4 6	1/8-NPT	1/8-NPT	1 11/16 43
BV-130	4 7/8 124	7/8 22	2 3/4 70	4 102	3/4 19	1 5/16 33	1 7/16 37	3/8 10	1/8-NPT	1/4-NPT	1 15/16 49
BV-190	5 1/2 140	1 1/4 32	3 9/16 90	4 102	9/16 14	2 51	1 7/8 48	3/8 10	1/4-NPT	1/4-NPT	2 1/4 57
BV-250	6 3/4 171	1 5/16 33	3 15/16 100	5 127	7/8 22	2 1/8 54	2 3/16 56	1/2 12	1/4-NPT	1/4-NPT	2 7/16 62
BV-320	6 11/16 170	1 5/8 41	4 7/8 124	5 127	1 1/8 29	2 9/16 65	2 3/4 70	1/2 12	3/8-NPT	3/8-NPT	2 3/4 70
BV-380	7 7/8 200	2 51	5 3/4 146	6 152	1 1/8 29	3 76	2 13/16 71	5/8 16	3/8-NPT	3/8-NPT	2 15/16 75

\*NPT Pipe Tap Size \*\*Bolt Size Note: Dimensions & data subject to change without notice.

**See Comparison & Replacement Chart Page 4.**

**PHONE: 800-633-0032 • www.vibco.com • FAX: 401-539-2584**